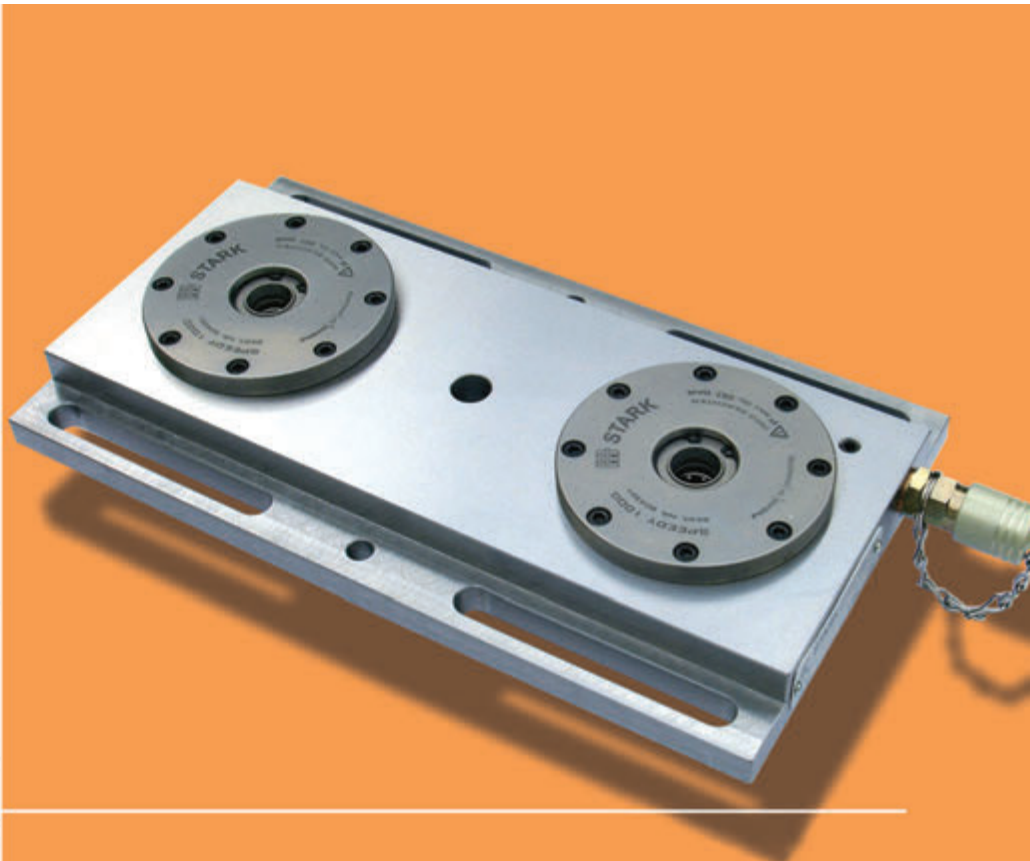




ROEMHELD
HILMA ■ STARK

Zero point mounting *system 1000*

SPEEDY module plate, size 10 kN



Invest successfully and increase efficiency



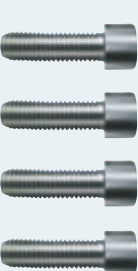




WM-020-111-02-en

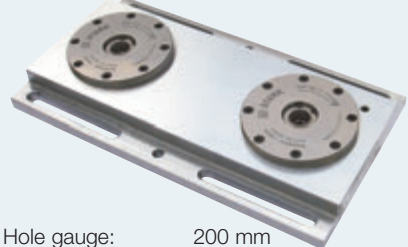
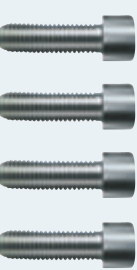



Enhance the productivity of your company

■ SPEEDY module plates – for efficient setting-up

Module plate start set, with overpressure release, order no. 803710

| | | | | |
|---|---|---|---|---|
|  |  |  |  |  |
| Hole gauge: 200 mm Insertion force: 2x 10'000 N Operating pressure: 80 bar Dimensions: 340 x 188 x 45 mm | | | | |
| Consisting of: | 804 209 | 931 059 | 704 020 | 803 411 |
| Module plate double SPEEDY 10 kN | Retractable nipple with zero point | Cyl. head screw M12x40 | Washer | Footpump, system pressure 80 bar air pressure max. 6 bar |

Module plate extension set, order no. 803 711

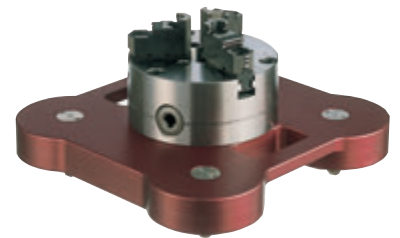
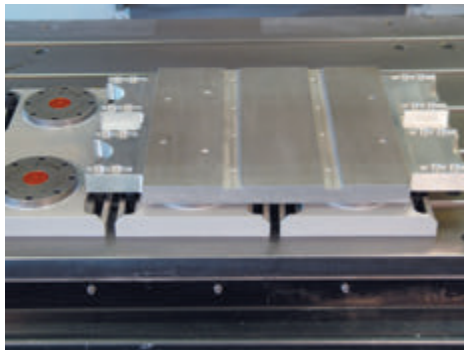
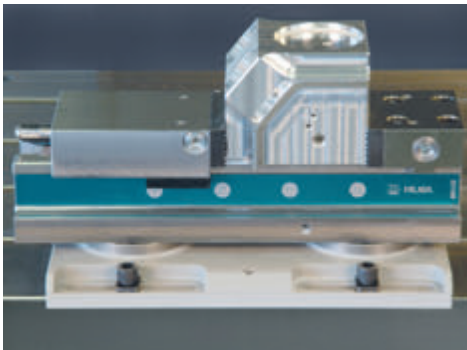
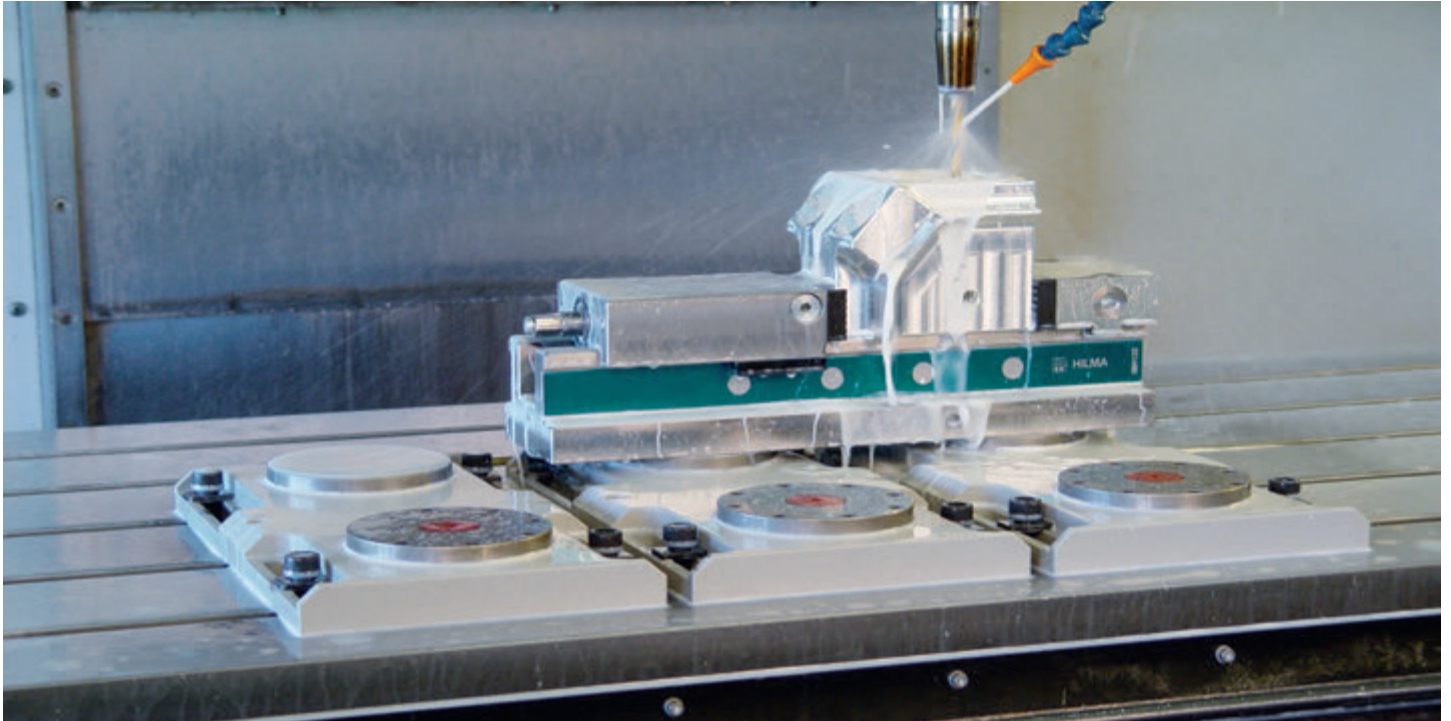
| | | | | |
|---|---|---|---|---|
|  |  |  |  |  |
| Hole gauge: 200 mm Insertion force: 2x 10'000 N Operating pressure: 80 bar Dimensions: 340 x 188 x 45 mm | | | | |
| Consisting of: | 931 059 | 704 020 | 804 392 804 369 | P00036 |
| Module plate double SPEEDY 10 kN | Cyl. head screw M12x40 | Washer | Swivel screw connector Swivel screw connector | MS-Pipe Ø 4/6x80 |

Module plate accessories

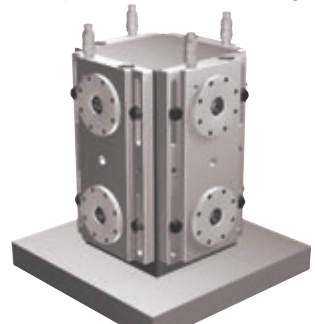
| | | | | | |
|---|---|---|---|---|---|
|  |  |  |  |  |  |
| 804 209 | 804 230 | 804 238 | 804 259 | 704 161 | 804 255 |
| Retractable nipple with zero point | Retractable nipple with balancer | Retractable nipple without centering | Positioning pin | Slidingblock with pin | Torque wrench |
|  |  |  |  | | 804 257 |
| 804 254 | 804 368 | 803 790 | 803 791 | | Socket |
| Retractable nipple key | Coupling | Rupture plug | Nut for T-slot M12x14 | | |

The SPEEDY module plate keeps you flexible – always

■ SPEEDY module plate – Potential multiplier for your production

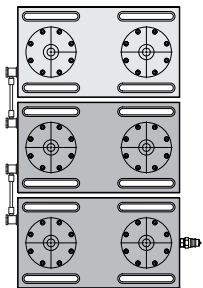


Jaw chuck palette (see main catalogue)

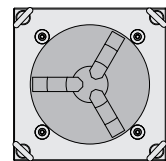


Module plate on mounting tower (versions on request)

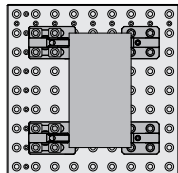
Module plates – Examples for multiple applications



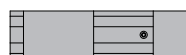
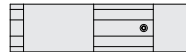
3 module plates



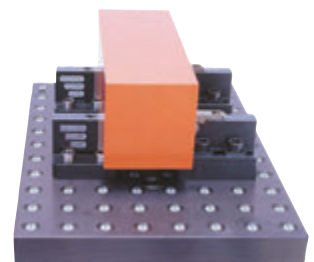
1 perforated palette with down draw clamps
1 jaw chuck palette



2 perforated pallet with down draw clamps

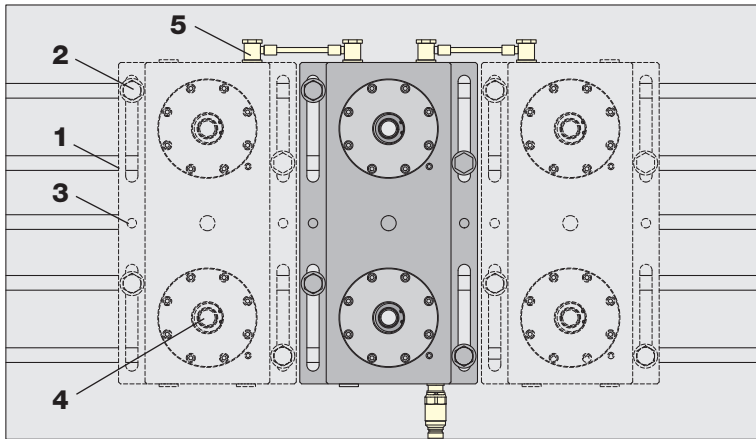


3 vises

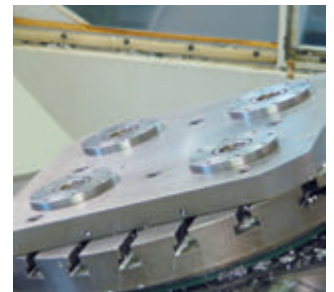


Perforated palette with down draw clamps (see main catalogue)

Setting-up the SPEEDY module plate – quick and easy



1. Align and screw on the SPEEDY module plate (1). Alignment also possible with the sliding block with pin (3) and positioning pin.
2. Move the positioning pin to the zero point (4).
3. With hole gauge (200mm), set the second and third module plates at the right or left.
4. Install the hydraulics (5).



SPEEDY module plates – a Stark innovation

- A low-cost entry into the clamping technology
- Flexible and module extensions
- Mountable on any machine table (machine independent)
- Significant savings in setting-up
- External setting-up extends machine production cycles


The success multipliers – SPEEDY module plates guarantee increased efficiency in production

Synergies of Core Competences

We are members of the ROEMHELD Group and our customers benefit from the synergies created by our cooperation with other competent technology companies. The ROEMHELD Group is globally oriented and serves industrial customers all around the world.

 **ROEMHELD**
HILMA ■ STARK
Römheld GmbH
Friedrichshütte
Römheldstraße 1-5
35321 Laubach / Germany
Tel. +49 6405 / 89-0
Fax: +49 6405 / 89-211
Email: info@roemheld.de
www.roemheld.de

 **ROEMHELD**
HILMA ■ STARK
Hilma-Römheld GmbH
Schützenstraße 74
57271 Hilchenbach
Germany
Tel. +49 2733 / 281-0
Fax: +49 2733 / 281-169
Email: info@hilma.de
www.roemheld-gruppe.de

 **ROEMHELD**
HILMA ■ STARK
STARK Spannsysteme GmbH
Römergrund 14
6830 Rankweil
Austria
Tel.: +43 5522 37 400-0
Fax: +43 5522 37 400-700
E-mail: info@stark-inc.com
www.stark-inc.com